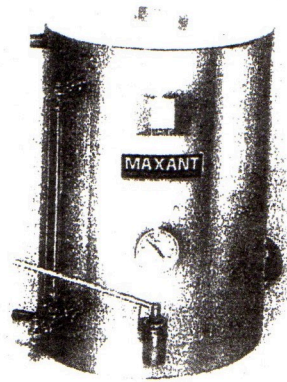


MAXANT

MODEL 600 SERIES TANKS



CONGRATULATIONS!

You have just purchased one of the finest tanks manufactured.

The material is 18 gauge #4 polished stainless steel.

The fittings are stainless steel. The entire tank is Tig welded and tested.

The resale value on Maxant tanks is almost 100%, (if can find one)

We use the best Watlow heaters, brass water gages, a top quality Weiss thermometer, and brass plugs.

see our web site: www.maxantindustries.com

telephone: 978-772-0576

fax: 978 772-6365

e-mail: sales@maxantindustries.com

THE BOXES CONTAIN:

tank

cover

watlow heater

nipples & plugs

Teflon tape

brass water gauges

thermometer

glass protector rods

glass

instructions

IF ANY OF THESE PARTS ARE MISSING, NOTIFY US IMMEDIATELY

*Thank you
S. Maxant*

MAXANT

BOTTLING TANKS MELTING TANKS

NEVER OPERATE THE HEATER WITHOUT WATER IN THE TANK
AND ABOVE THE HEATING ELEMENT!
IT WILL SURELY BURN OUT IF NOT COVERED WITH WATER

COPPER ELEMENTS ARE FOR WATER
STAINLESS STEEL ELEMENTS ARE FOR OIL.

HOW TO INSTALL WATER GAUGE

INSTALL TOP AND BOTTOM FITTINGS
REMOVE SUPPORTS AND SLIDE ON TO THE GLASS TUBE
TILT TOP FITTING AND INSERT GLASS.

ADJUST FITTINGS SO TUBE IS STRAIGHT UP AND DOWN
INSTALL GLASS ROD PROTECTORS IN HOLES.

THE BOTTOM FITTING HAS A DRAIN VALVE.

OCCASIONALLY OPEN VALVE AND DRAIN WATER FROM GLASS TO MAKE SURE
WATER IN GLASS AGREES WITH WATER IN TANK AND IS NOT PLUGGED SO YOU
HAVE A FALSE READING.

IN CASE GLASS BREAKS, THE TANK CAN STILL BE OPERATED JUST BY
CLOSING THE BOTTOM VALVE

INTERNAL FILTER

IF USING THE INTERNAL FILTER, IT CAN BE LIFTED OUT WHEN THE
TANK IS FULL (or left in place)
YOU MAY HAVE TO OPERATE A SLIGHTLY
HIGHER TEMPERATURES
TO INCREASE FLOW.



Contents: Tank and cover, heater, thermometer, valve and nipple, site gages and drain plug, glass and protector rods.

Placement: Set tank on your stand at such a height as to have comfort while bottling while still being able to easily pour out a 5 gallon (60 lb.) container.

Assembly: Wrap all male threads with Teflon tape to prevent leakage. Use the picture as your guide. When installing the site gages, tighten the lower fitting (the one with the wing nut, which is for draining the glass tube) all the way. Keep the top fitting loose so you can turn it to fit in the glass tube. The water level WILL NOT reach the top of the glass, so don't worry about that fitting leaking. The packing nuts must be placed on the glass tube BEFORE installation.

WARNING: DO NOT PLUG IN HEATER UNTIL WATER IS ADDED TO TANK TO A LEVEL OF ABOUT 3/4 FULL IN GLASS TUBE.

Usage: Set heater to desired temperature for your bottling process. We do not recommend temperatures over 120F. From room temperature, the honey should be warm enough to work with in about three hours (longer if sugared). Any honey not bottled is safe to remain in the tank. Just remember to shut down heater.

Maintenance: Stainless steel is not hard to maintain! Use warm water to wipe down insides of tank. Do not use sudsy soaps as these may leave a residue. If a cleanser is need, bleach may be your best option. Be certain to flow many gallons of water through the tank and valve, and allow same to air dry for a good long time. Do not use abrasive cleaners.

The stem on the valve needs a small amount of lubricant now and then. Food grease applied to the exposed part of stem when in open position by finger is ok. The o-ring seal will wipe away excess grease and you can just clean it away.

Note: Should you need to apply too much force to the valve handle, it may be due to sugared honey. DO NOT FORCE IT OPEN!! If you do you may dislodge o-rings and need to replace them. Instead, place a heat source (drop light, hair drier) close to the valve until it will open freely.

This tank will give you many years of uninterrupted use with minimum care. Enjoy bottling!